

COPOS[™]
GRANOS
COLLECTION - 2019

FULL
BODY
TILES

COPOS[™] & GRANOS

COLLECTION - 2019

STONES NATURAL FRAGMENTS

A multitude of different kinds of sedimentary rock can be found in the natural world, made of fragments of several materials and minerals. Copos and Granos emulates this heterogeneous mix, highlighting the beauty of the tiny pebbles trapped in the rock. A large format surface that integrates the thoroughness of every little detail.

FULL
BODY
TILES

Our exploration

Our source of inspiration is often nurtured by travelling and exploring through the wonders of the land. It is there that we find the essence of our inspiration. This new collection unites depth and simplicity, naturalness and mysticism, density and exquisite. The memories of the exploration becomes an ode to the beauty in any of the spaces. Because when nature speaks, spaces transform themselves into the life which we dream of.



6 colors



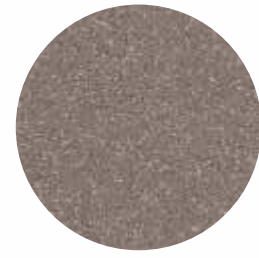
White



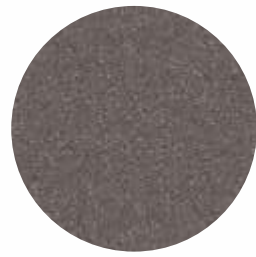
Crema



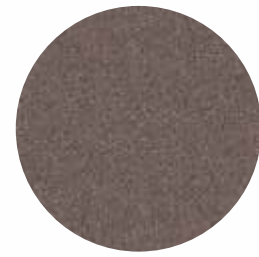
Grey



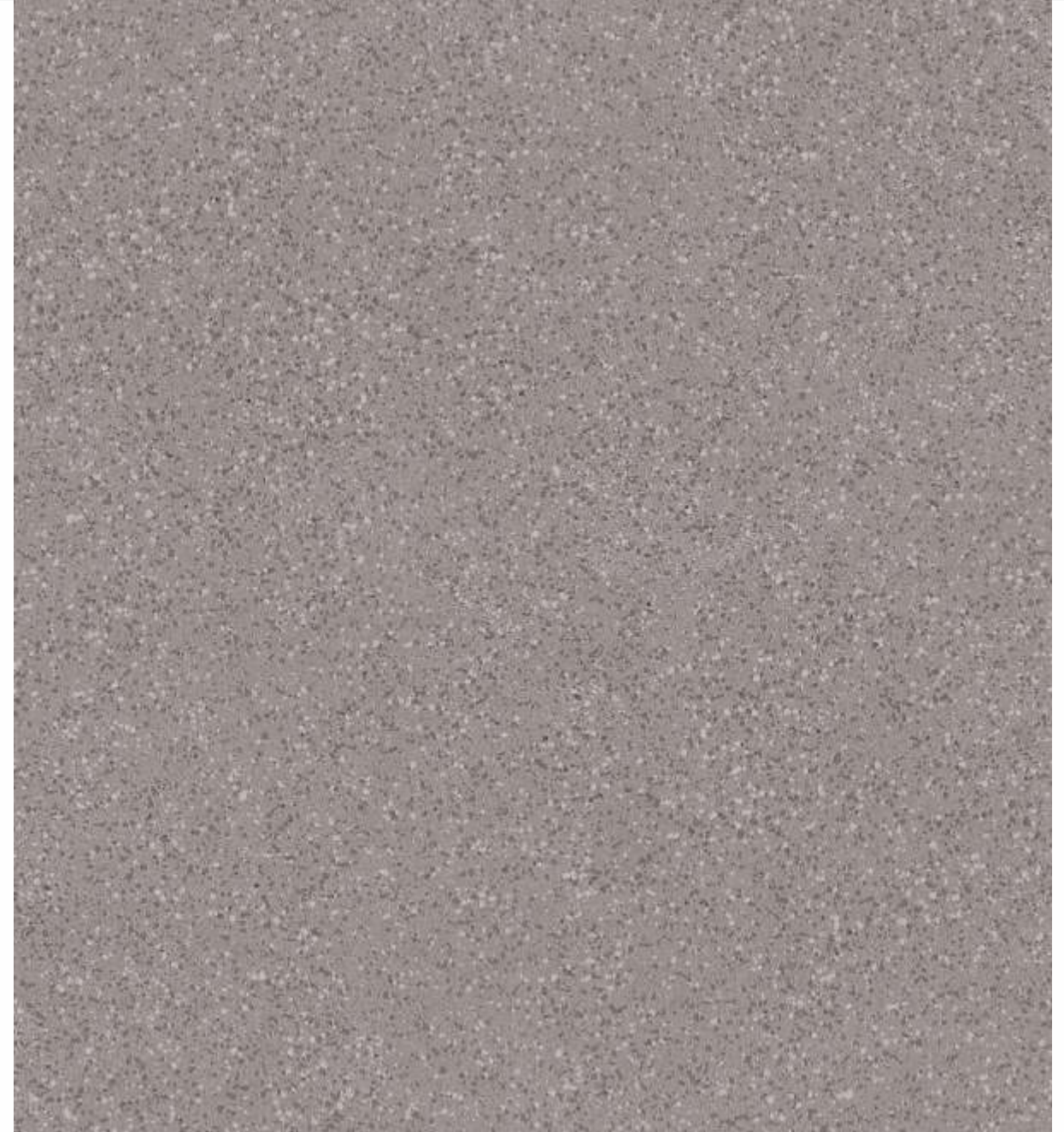
Sahara



Black



Coffee



7 sizes

THICKNESS: 12 mm

SURFACES: Glossy

9 mm

Glossy / Matt

9 mm

Matt

20 mm

Matt



80x240cm
798x2398mm



120x120cm
1198x1198mm



80x160cm
798x1598mm



80x80cm
798x798mm



60x120cm
600x1200mm



60x60cm
600x600mm



60x60cm
600x600mm

Copos

Natural materials in a pure state like granite inspire the surface of Copos. Warm colors depict a conglomerate rock pattern evocative of newly quarried stone, with an elegant bush-hammered texture that conveys the features of honed stones applied to the decoration of spaces. Copos sums up the charm and variety of nature merged with the latest style and trends.

**FULL
BODY
TILES**

SURFACES : Matt
THICKNESS : 9 mm



Copos collection

Wall
Copos Crema _Size : 80x80cm / 800x800mm

Floor
Copos Grey _Size : 80x80cm / 800x800mm



Wall
Copos Sahara _Size : 80x160cm / 798x1598mm

Floor
Copos Sahara _Size : 80x160cm / 798x1598mm
Copos Crema _Size : 80x160cm / 798x1598mm

Copos collection

THICKNESS: 9 mm

SURFACES : Matt



Floor
Copos White _Size : 60x60cm / 600x600mm

Table Top
Copos Nero _Size : 80x240cm / 798x2398mm

THICKNESS: 9 mm **SURFACE:** Glossy

Copos collection

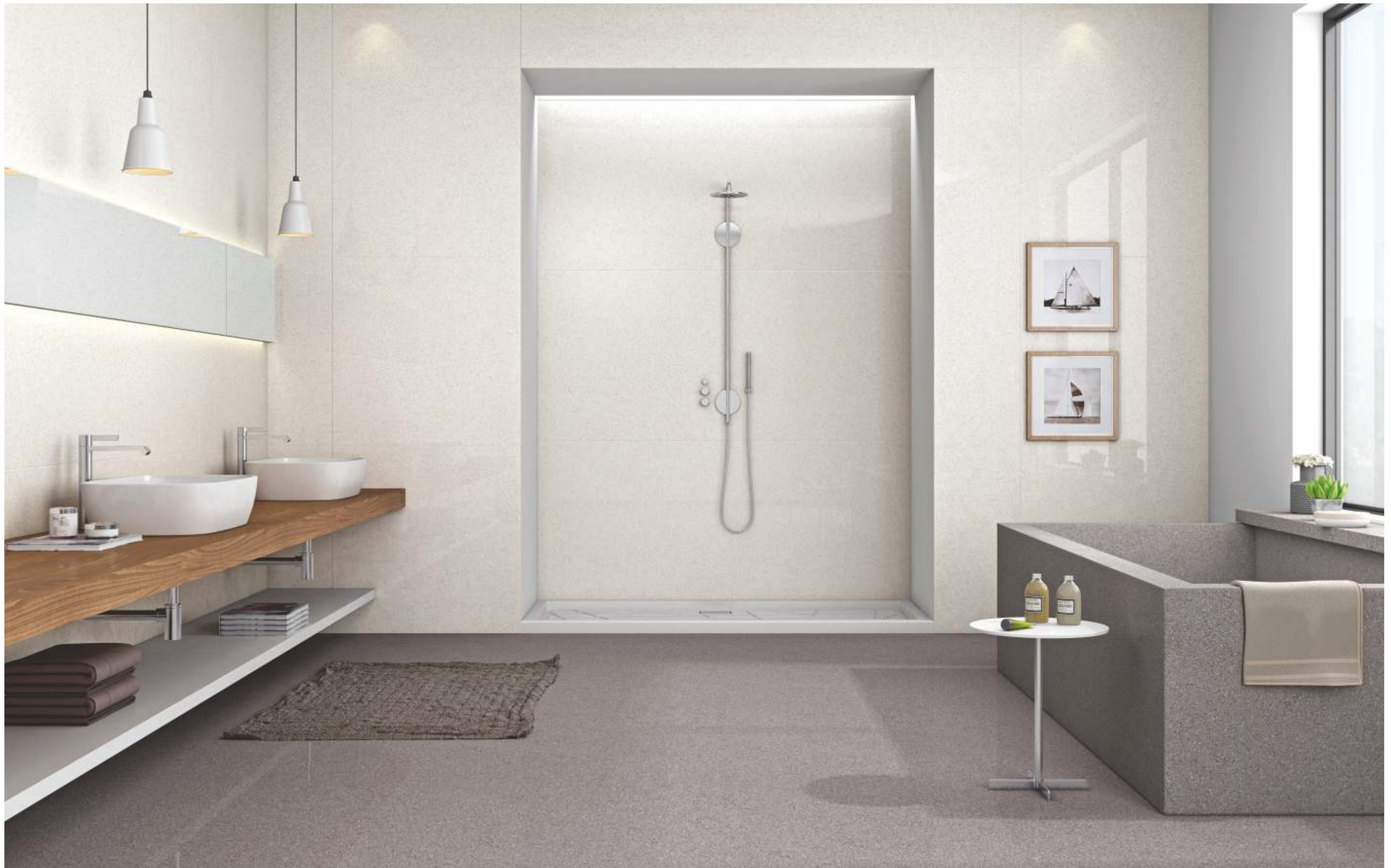


Floor
Copos Coffee _Size : 60x120cm / 600x1200mm

Wall
Copos White _Size : 80x80cm / 798x798mm

Floor
Copos Grey _Size : 80x80cm / 798x798mm

Copos collection



THICKNESS: 9 mm SURFACE: Glossy & Matt

Wall

Copos Black _Size : 80x160cm / 798x1598mm

Floor

Copos Grey _Size : 80x160cm / 798x1598mm



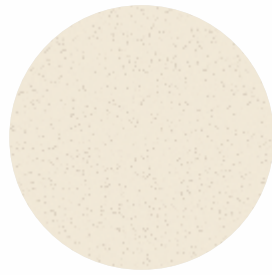
Copos collection

THICKNESS: 9 mm SURFACE: Matt

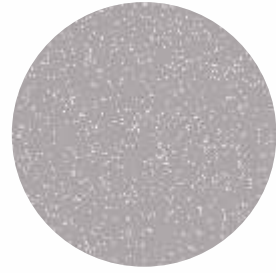
7 colors



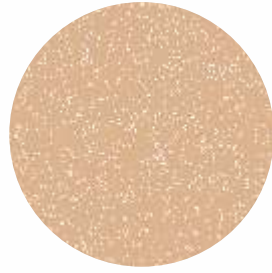
White



Crema



Cemento



Sahara



Nero



Tobacco



Verde

3 sizes

THICKNESS: 12 mm

SURFACES: Glossy

9 mm

Glossy / Matt



120x240cm
1198x2398mm



120x120cm
1198x1198mm



60x120cm
600x1200mm

Granos

Less is more. Textural looks are still a popular way of bringing a modern minimalist appeal to living spaces.

Granos is a collection with a subtle relief pattern, available in a choice of large formats. Conceived to lend a sense of continuity and added spaciousness to rooms.

FULL
BODY
TILES

Granos collection



Floor
Granos Cemento _Size : 120x120cm / 1198x1198mm

Counter Top
Copos White _Size : 120x240cm / 1198x2398mm

SURFACE :Glossy

THICKNESS : 9 mm / 12 mm



Wall
Granos White
_Size : 120x240cm / 1198x2398mm

Granos Verde
_Size : 120x240cm / 1198x2398mm

Floor
Granos Verde
_Size : 120x240cm / 1198x2398mm

Granos collection

THICKNESS : 9 mm

SURFACE : Matt

THICKNESS : 9 mm **SURFACE** : High Glossy



Counter Top

Granos Tabaco _Size : 120x240cm / 1198x2398mm

Floor

Granos Sahara _Size : 120x120cm / 1198x1198mm

SURFACE : Glossy

THICKNESS : 9 mm / 12 mm

Granos collection

Wall
Granos Crema
_Size : 120x120cm / 1198x1198mm

Floor
Granos Tobacco
_Size : 120x120cm / 1198x1198mm

THICKNESS : 9 mm

SURFACE : Matt



Granos collection

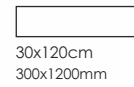
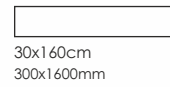
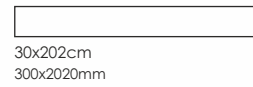
2 thickness



Step

3 sizes

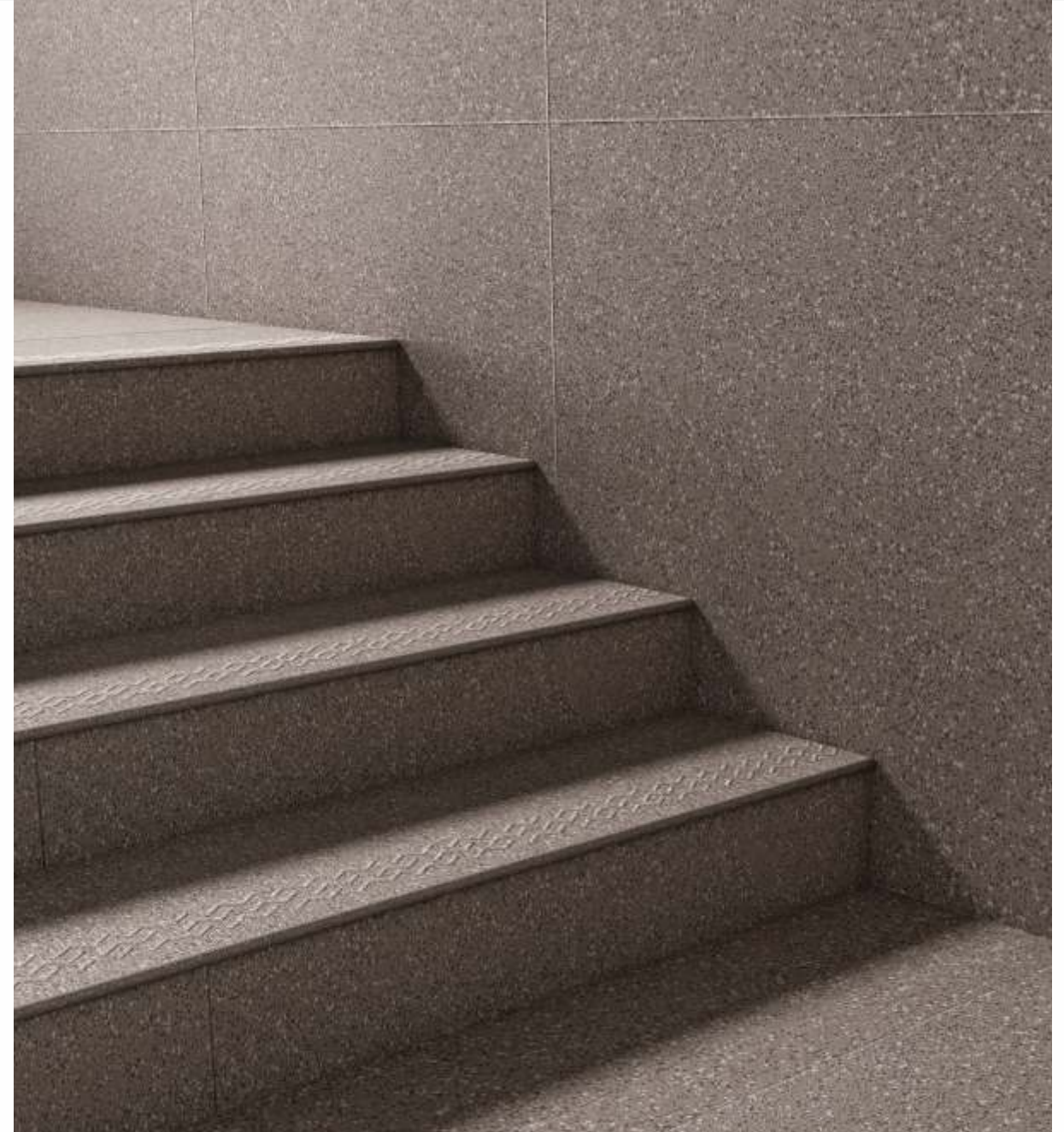
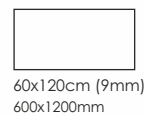
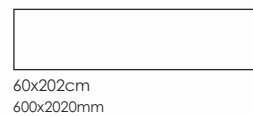
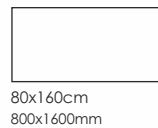
THICKNESS: 12 mm
SURFACE: Matt



Riser

4 sizes

THICKNESS: 12 mm
SURFACE: Matt



Copos Step & Riser

Copos step & riser has forcefully burst into our lives once again as a trend in interior design and decoration. We renew these surfaces with architectural shades of colors.

We update this familiar design with an innovative revamped air, and it is composed of mineral shades together with other timeless and neutral ones.

**FULL
BODY
TILES**



SURFACE : Matt

THICKNESS : 12 mm



Copos step & riser

Step & Riser

Copos Grey _Size : 30x120cm / 300x1200mm

Floor

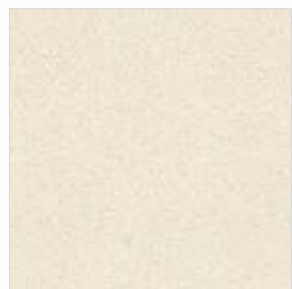
Copos Grey _Size : 60x60cm / 600x600mm



80x240cm / 798x2398mm



80x160cm / 798x1598mm



120x120cm / 1198x1198mm



60x120cm / 600x1200mm



80x80cm / 798x798mm



60x60cm / 600x600mm

Copos Crema



30x202cm / 300x2020mm



30x160cm / 300x1600mm



30x120cm / 300x1200mm

Copos Crema Step



60x202cm / 600x2020mm



80x160cm / 800x1600mm



19x160cm / 190x1600mm



60x120cm / 600x1200mm (9mm)

Copos Crema Riser



80x240cm / 798x2398mm



80x160cm / 798x1598mm



120x120cm / 1198x1198mm



60x120cm / 600x1200mm



80x80cm / 798x798mm



60x60cm / 600x600mm

Copos Sahara



30x202cm / 300x2020mm



30x160cm / 300x1600mm



30x120cm / 300x1200mm

Copos Sahara Step



60x202cm / 600x2020mm



80x160cm / 800x1600mm



19x160cm / 190x1600mm



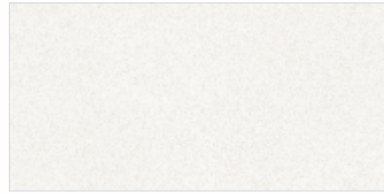
60x120cm / 600x1200mm (9mm)

Copos Sahara Riser

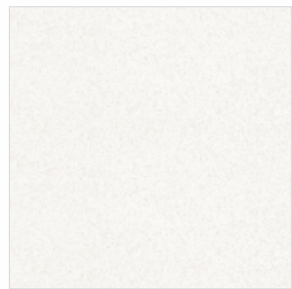
Copos



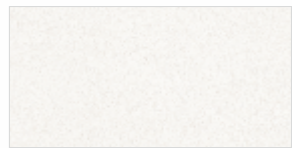
80x240cm / 798x2398mm



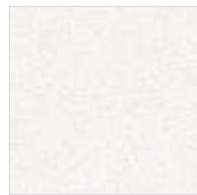
80x160cm / 798x1598mm



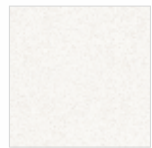
120x120cm / 1198x1198mm



60x120cm / 600x1200mm



80x80cm / 798x798mm



60x60cm / 600x600mm

Copos White

Copos



80x240cm / 798x2398mm



80x160cm / 798x1598mm



120x120cm / 1198x1198mm



60x120cm / 600x1200mm



80x80cm / 798x798mm



60x60cm / 600x600mm

Copos Coffee



30x202cm / 300x2020mm



30x160cm / 300x1600mm



30x120cm / 300x1200mm

Copos Coffee Step



60x202cm / 600x2020mm



80x160cm / 800x1600mm



19x160cm / 190x1600mm



60x120cm / 600x1200mm (9mm)

Copos Coffee Riser



80x240cm / 798x2398mm



80x160cm / 798x1598mm



120x120cm / 1198x1198mm



60x120cm / 600x1200mm



80x80cm / 798x798mm



60x60cm / 600x600mm

Copos Grey



30x202cm / 300x2020mm



30x160cm / 300x1600mm



30x120cm / 300x1200mm

Copos Grey Step



60x202cm / 600x2020mm



80x160cm / 800x1600mm



19x160cm / 190x1600mm



60x120cm / 600x1200mm (9mm)

Copos Grey Riser



80x240cm / 798x2398mm



80x160cm / 798x1598mm



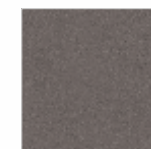
120x120cm / 1198x1198mm



60x120cm / 600x1200mm



80x80cm / 798x798mm



60x60cm / 600x600mm

Copos Black



30x202cm / 300x2020mm



30x160cm / 300x1600mm



30x120cm / 300x1200mm

Copos Black Step



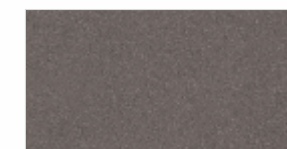
60x202cm / 600x2020mm



80x160cm / 800x1600mm



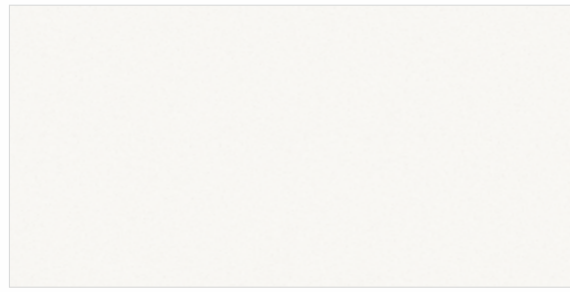
19x160cm / 190x1600mm



60x120cm / 600x1200mm (9mm)

Copos Black Riser

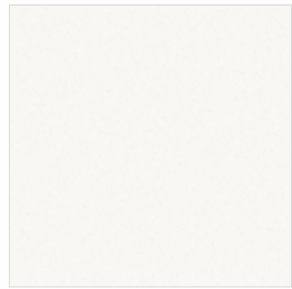
Copos



120x240cm / 1198x2398mm



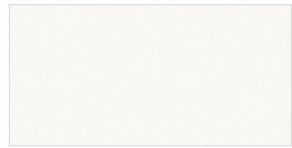
120x240cm / 1198x2398mm



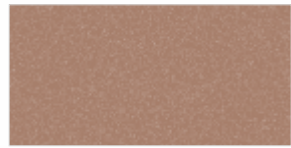
120x120cm / 1198x1198mm



120x120cm / 1198x1198mm



60x120cm / 600x1200mm



60x120cm / 600x1200mm

Granos White

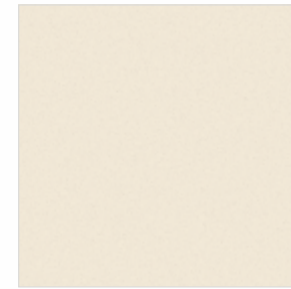
Granos Tobacco



120x240cm / 1198x2398mm



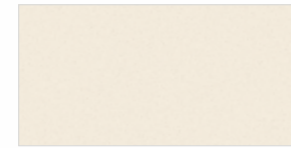
120x240cm / 1198x2398mm



120x120cm / 1198x1198mm



120x120cm / 1198x1198mm



60x120cm / 600x1200mm



60x120cm / 600x1200mm

Granos Crema

Granos Sahara



120x240cm / 1198x2398mm



120x120cm / 1198x1198mm



60x120cm / 600x1200mm

Granos Cemento



120x240cm / 1198x2398mm



120x120cm / 1198x1198mm

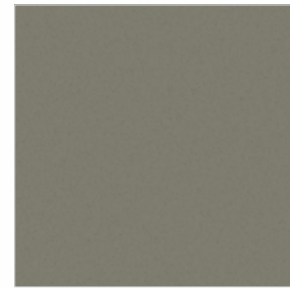


60x120cm / 600x1200mm

Granos Nero



120x240cm / 1198x2398mm



120x120cm / 1198x1198mm



60x120cm / 600x1200mm

Granos Verde

Installation Suggestions



Traditional Floor Laying

SCS requires similar laying conditions to those required for traditional formats. Requires the adhesive to be applied both on the setting bed and on the back of the tile.

Tiles for flooring require the following conditions:

- A flat surface;
- Clean and free from dust, scraps and any lumps of cement;
- The setting bed must be uniform and have already undergone the drying shrinkage process;
- Repair of any cracks;
- Any uneven parts on the surface must be filled with suitable levelling compounds.

INSTRUMENTS REQUIRED

- Cement-based powder adhesive for full spread
- 3x3mm square toothed trowel and 15mm round toothed trowel;
- Frame with suction cups for handling or double suction cups;
- Non-bounce plastic mallet 170x370mm;
- Levelling system: base clip + wedge + pliers.

Processing stages

BONDING TO THE FLOOR

- 1) Ensure that the surface to be covered is solid, flat and free from dust and oil/grease.
- 2) Use the adhesives described above mixed according to the specifications indicated in the technical data sheet of the chosen adhesive.
- 3) Spread the adhesive onto the surface to be covered with a 15mm round toothed trowel across an area of 5/10 cm more than the dimensions of the Tile.
- 4) With the tile in a vertical position on the handling frame, spread the adhesive onto the back of the slab with a 3x3mm square toothed trowel.
- 5) Using the frame with suction cups, bring the tile into a horizontal position and lay it.
- 6) To guarantee uniform bonding of the slab, the special 170x370mm non-bounce plastic mallet must be used, tapping from the middle towards the edges so as to remove any air pockets between the back of the tile, the adhesive and the surface to be tiled.
- 7) Using the levelling system.

LEVELLING SYSTEM

The levelling system aims to guarantee perfectly levelled floors simply and quickly, eliminating any unevenness between the tiles. The levelling system is strongly recommended for laying Tiles.

Instruments required

- Base clip;
- Wedge;
- Adjustable pliers for installing floors/wall tiles.

Application of the levelling system

Positioning the base clip:

- a) After spreading the adhesive, insert the base clip below the tile on the 4 sides.
- b) Depending on the format of the tile, position one or more supports for each side of the tile.
- c) Position the tile.

Inserting the wedge:

- a) Insert the wedge in the slot of the support, taking care not to exceed the breaking point.
- b) To make inserting the wedge easier, it is recommended to use the adjustable pliers.

Removing the support:

- a) Once the adhesive has dried, the protruding part of the support can be separated from the base clip by tapping with your foot in line with the joint.

GENERAL ADVICE FOR GROUTING

Pay attention while choosing joint sealants: check the technical sheets, choose them shade matched and follow carefully the recommended cleaning times, as many new generation coloured sealants contain pigments and additives that can be very strong. For polished/glossy surfaces do not use epoxy grouts or synthetic based flexible mortars (Flexfughe) and do not add additives/latexes to the grout, as they make the removal of residues with standard detergents very difficult. However, should you decide to use them, it is recommended to make a previous test off site

Cleaning And Maintenance

Introduction

All materials are easy to clean and maintain. Regular cleaning highlights the aesthetic features of the material and gives the floor an exceptional shine.

Initial Cleaning

The initial cleaning done immediately after the flooring laid is of essential importance for removing all mortar, adhesives and epoxy residues that may be left in the joints. In this initial phase, we recommend that you use an acid product such as DETERDEK, in a 1:5 concentration. Rub

energetically to obtain the maximum cleaning. After washing the floor, which is just as important, rinse thoroughly with plenty of water to remove all traces of the detergent used. These steps are recommended for all collections.

Maintenance And Care

Thanks to the characteristics of the production process (high firing temperature, raw materials of great quality, sinterizing process), the surface of material is waterproof (the water absorption is minimum). Therefore the dirt cannot penetrate but it is necessary to remove it from the surface. For this procedure do not use detergents containing waxes or waxing products, in order to avoid the

forming of greasy layers; for choosing the most appropriate detergent refer to the following chapters. After the installation of floors, particularly of those made with polished materials, the surfaces should be adequately protected with particle board or other suitable materials in order to protect them from dirt and on-site processing. This prevents damage caused by subsequent processing.

General Recommendations

For commercial and heavily used surface areas such as airports, hospitals, supermarkets, and any public spaces with heavy foot traffic which are thus subject to considerable soiling, it is necessary to use automatic cleaning machines with suction of the washing liquids. This allows not only deep cleaning, but also the continuous removal of liquids containing substances that cause soiling, thus preventing the formation of films which are very difficult to remove. Any detergent on the market can be used in the desired concentration for cleaning the high

technology sinterized products, with the exception of HYDROFLUORIC acid (HF) or its compounds, according to UNI-EN 176 standards. In order to keep costs limited and speed up maintenance operations, the concentration of the detergent must always be as low as possible. For raised floors we suggest to choose bright or polished surfaces in large sizes: these materials can be dry cleaned or with the minimum use of liquids. After the floor is laid it is necessary to make a very accurate initial cleaning with proper products.

Mat Materials

For these materials, after completing the steps described in the section "Initial Cleaning", you only need to clean the floor with hot water containing small quantities of an alkaline detergent such as FILA CLEANER in a concentration 1:200. On these types of surface it is not

advisable to apply a waterproofing product: the absence of porosity causes the waterproofing agent to deposit on the surface in an uneven way and to have unpleasant aesthetic effects.

Technical Specification

CHARACTERISTIC	STANDARD AS PER ISO13006:2012/ EN14411 Gr.Bla	STANDARD AS PER IS15622:2017 Gr.Bla	MEAN VALUE OF	TEST METHOD
Regulatory Properties				
Deviation in Length and Width	±0.50 %	±0.10 %	± 0.10 %	ISO 10545-2 & IS 13630-1
Deviation in Thickness	±5.0 %	±5.0 %	± 4.0 %	ISO 10545-2 & IS 13630-1
Straightness in Side	±0.50 %	±0.10 %	± 0.10 %	ISO 10545-2 & IS 13630-1
Rectangularity	±0.60 %	±0.10%	± 0.10 %	ISO 10545-2 & IS 13630-1
Surface Flatness Central Curvature	±0.50 %	±0.50 %	± 0.10 %	ISO 10545-2 & IS 13630-1
Surface Flatness Edge Curvature	±0.50 %	±0.50 %	± 0.10 %	ISO 10545-2 & IS 13630-1
Surface Flatness Warpage	±0.50 %	±0.50 %	± 0.10 %	ISO 10545-2 & IS 13630-1
Surface Quality	>95% defects free	>95% defects free	>95% defects free	ISO 10545-2 & IS 13630-1
Small Color Difference	N.A.	N.A.	N.A.	ISO 10545-16
Glossiness (With Nano Polished)	As per Manufacturer	As per Manufacturer	> 90° **	Gloss Meter 60°
Glossiness (Without Polished)	As per Manufacturer	As per Manufacturer	7°< Gloss <14***	Gloss Meter 60°
Glossiness (Satin Finished)	As per Manufacturer	As per Manufacturer	15°< Gloss <25***	Gloss Meter 60°
Structural Properties				
Water Absorption	≤0.50 %	≤0.080 %	≤0.050 %	ISO 10545-3 & IS 13630-2
Bulk Density	>2.00 g/cc	Min. 2.20 g/cc	>2.28 gm/cc	DIN51082 & IS 13630-3
Massive Mechanical Properties				
Modulus of Rupture (For 9mm,10mm & 12mm)	Min. 35.0 N/mm ²	Min. 35.0 N/mm ²	Min. 37.0 N/mm ²	ISO 10545-4 & IS 13630-6
Modulus of Rupture (For 16mm & 20mm)	Min. 35.0 N/mm ²	Min. 35.0 N/mm ²	Min. 42.0 N/mm ²	ISO 10545-4 & IS 13630-6
Breaking Strength Thickness ≥7.5	Min. 1300.0 N	Min. 1300.0 N	Min. 1600 N	ISO 10545-4 & IS 13630-6
Breaking Strength Thickness ≥7.5(For 10mm & 12mm)	Min. 1300.0 N	Min. 1300.0 N	Min. 2000 N	ISO 10545-4 & IS 13630-6
Breaking Strength Thickness ≥7.5(For 16mm & 20mm)	Min. 1300.0 N	Min. 1300.0 N	Min. 7500 N	ISO 10545-4 & IS 13630-6
Surface Mechanical Properties				
MOH'S Hardness	Min. 6	Min. 5	Min. 7***	EN 101 & IS 13630-13
Deep Abrasion Resistance	Max. 175 mm ³	Max. 140 mm ³	Max. 132 mm ³	ISO 10545-6 & IS 13630-12
Thermal Hygrometric Properties				
Moisture Expansion	Max. 0.6 mm/m	Max. 0.02 mm/m	NIL	ISO 10545-10 & IS 13630-3
Thermal Expansion(COE) at 100°C	As per Manufacturer	Max. 6.0 x 10-6	Max. 6.0 x 10-6	ISO 10545-8 & IS 13630-4
Thermal Shock Resistance	Min. 10 Cycle	Min. 10 Cycle	Min. 10 Cycle	ISO 10545-9 & IS 13630-5
Impact Resistance(COR)	As per Manufacturer	Min. 0.55	Min. 0.55	ISO 10545-5 & IS 13630-14
Frost Resistance	As per Manufacturer	As per Manufacturer	Frost Proof	ISO10545-12 & IS 13630-10
Chemical Properties				
Resistance to Staining Unglazed	As per Manufacturer	Min Class II	Min.Class 4/Min. Class II	ISO 10545-14 & IS 13630-8
Resistance to Household Chemicals & Swimming PoolSalts Unglazed	Min. Class UB	As per Manufacturer	Min. Class UB/Min. Class A	ISO 10545-13 & IS 13630-7
Resistance to Low Concentrate Acid and AlkalisUnglazed	As per Manufacturer	As per Manufacturer	Min. Class ULB****/ Min. Class A****	ISO 10545-13 & IS 13630-7
Resistance to High Concentrate Acid and AlkalisUnglazed	As per Manufacturer	As per Manufacturer	Min. Class UHB****/ Min. Class A****	ISO 10545-13 & IS 13630-7
Safety Properties				
Skid resistance(DCOF-DRY)	As per Manufacturer	As per Manufacturer	>0.40	ISO 10545-17
Slip resistance(DCOF){ R Value }#	As per Manufacturer	As per Manufacturer	N.A.	ISO 10545-17
Fire Resistance	As per Manufacturer	As per Manufacturer	Fire Proof	N.A.

** Glosiness 90 % with nano technology

*** Without nano technology (Unpolished Vitrified tiles)

Depending on Application area (low or high intensity of trafic)

**** Except Hydrofluoric Acid & it's compound

As per customer requirement

Packing Details

PRODUCT	SIZE	ACTUAL SIZE	THICKNESS	TILES / BOX	COVERAGE AREA / BOX
TILES	80x240cm	798x2398mm	12mm	1 pcs.	1.92 sq. mtr. 20.66 sq. ft.
	80x160cm	798x1598mm	9mm	2 pcs.	2.55 sq. mtr. 27.45 sq. ft.
	120x120cm	1198x1198cm	9mm	2 pcs.	2.87 sq. mtr. 30.89 sq. ft.
	80x80cm	798x798mm	9mm	3 pcs.	1.92 sq. mtr. 20.66 sq. ft.
	60x120cm	600x1200mm	9mm	2 pcs.	1.44 sq. mtr. 15.50 sq. ft.
	60x60cm	600x600mm	9mm	4 pcs.	1.44 sq. mtr. 15.50 sq. ft.
	60x60cm	600x600mm	20mm	2 pcs.	0.72 sq. mtr. 7.75 sq. ft.
STEP	30x202cm	300x2020mm	12mm	3 pcs.	1.82 sq. mtr. 19.57 sq. ft.
	30x160cm	300x1600mm	12mm	4 pcs.	1.92 sq. mtr. 20.66 sq. ft.
	30x120cm	300x1200mm	12mm	3 pcs.	1.08 sq. mtr. 11.63 sq. ft.
RISER	60x202cm	600x2020mm	12mm	2 pcs.	2.41 sq. mtr. 25.94 sq. ft.
	80x160cm	800x1600mm	12mm	2 pcs.	2.56 sq. mtr. 27.52 sq. ft.
	60x120cm	600x1200mm	9mm	2 pcs.	1.44 sq. mtr. 15.50 sq. ft.
	19x160cm	190x1600mm	12mm	4 pcs.	1.21 sq. mtr. 13.08 sq. ft.

