

ROCKDECK® 400x400mm

12mm



OUTDOOR  
VITRIFIED TILES





12mm

400x400mm

**ROCKDECK**

COLLECTION 2019/'20

## CHOOSE THE RIGHT MOOD FOR YOUR OUTDOOR AMBIENCE

Everyone understands the importance of the interior spaces where you spend most of your time, be it your home or workplace. Being the producers of an Architectural product, we never want to limit ourselves by focussing just on the interior spaces. Our new collection of outdoor tiles allows you to choose the right mood for your outdoor ambience with the optimum strength and durability. We care about the outside as much as we care about the inside..

our brand  
ambassador  
**Hrithik Roshan**





R D 01

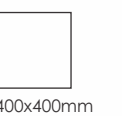


R D 02



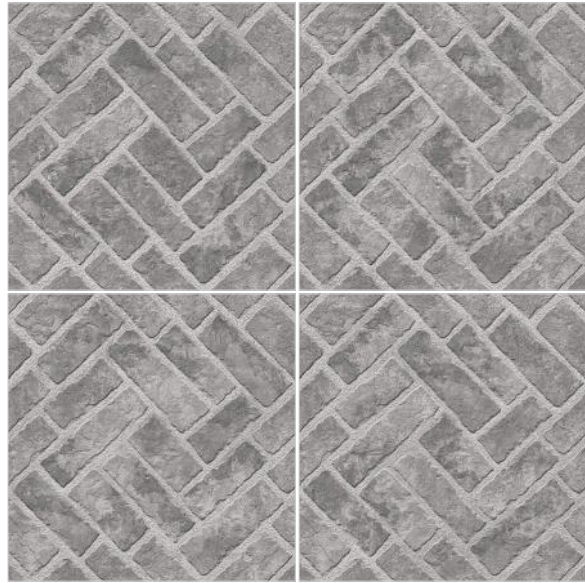
Floor  
R D 01  
\_Size : 400x400mm

THICKNESS: 12 mm  
SURFACE: Matt



400x400mm





R D 03



R D 05



R D 07



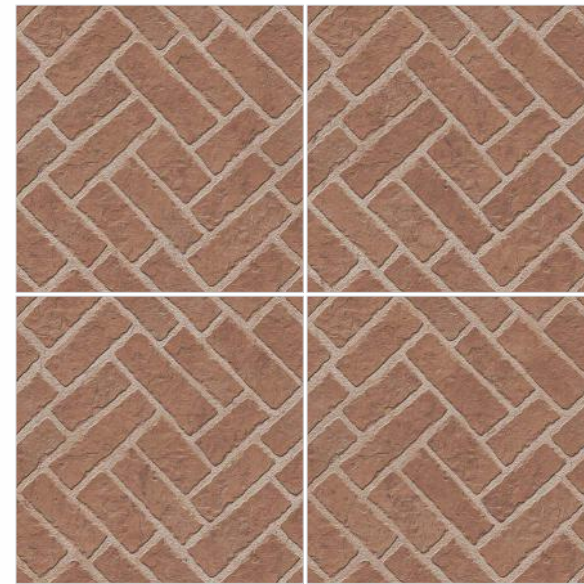
R D 15



R D 04



R D 08



R D 06



R D 09





RD 10



RD 12



RD 17



RD 18



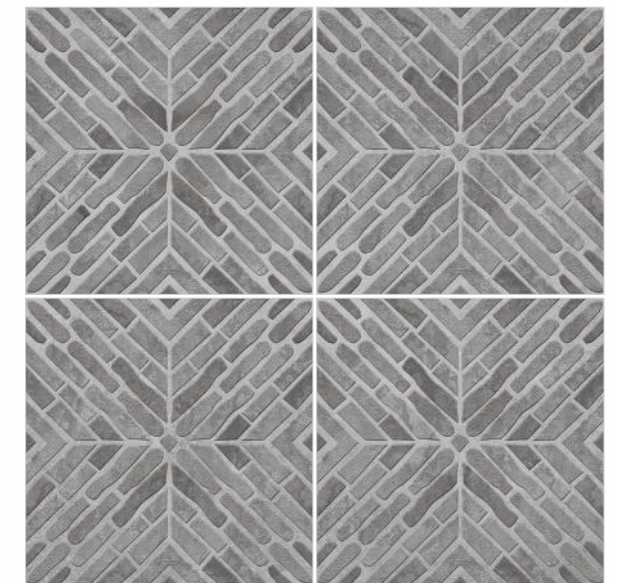
RD 13



RD 11



RD 16

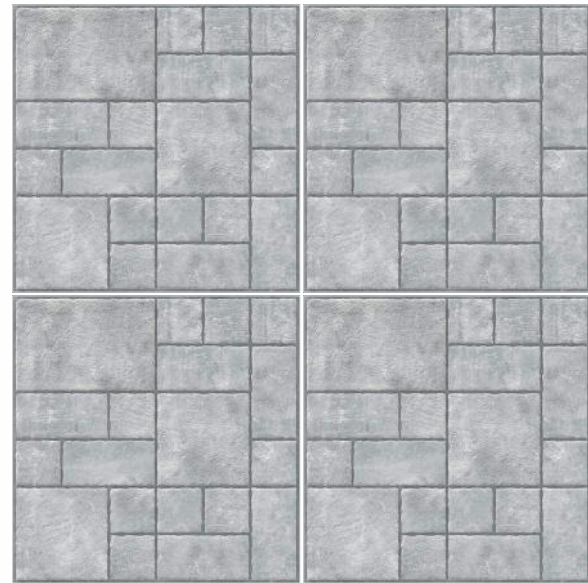


RD 19





R D 20



R D 14



R D 27



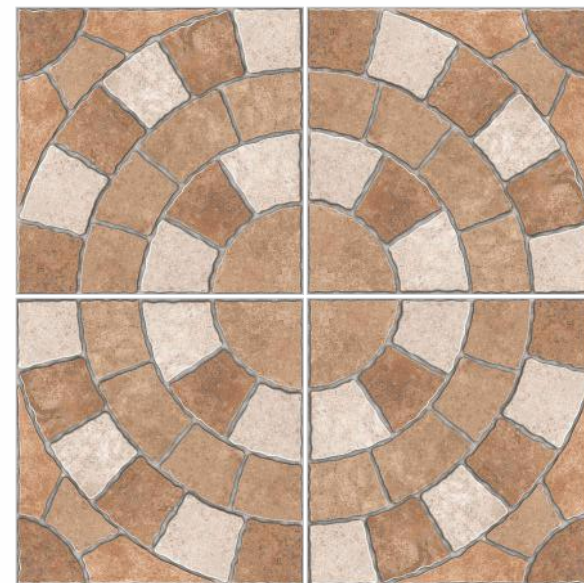
R D 29



R D 21

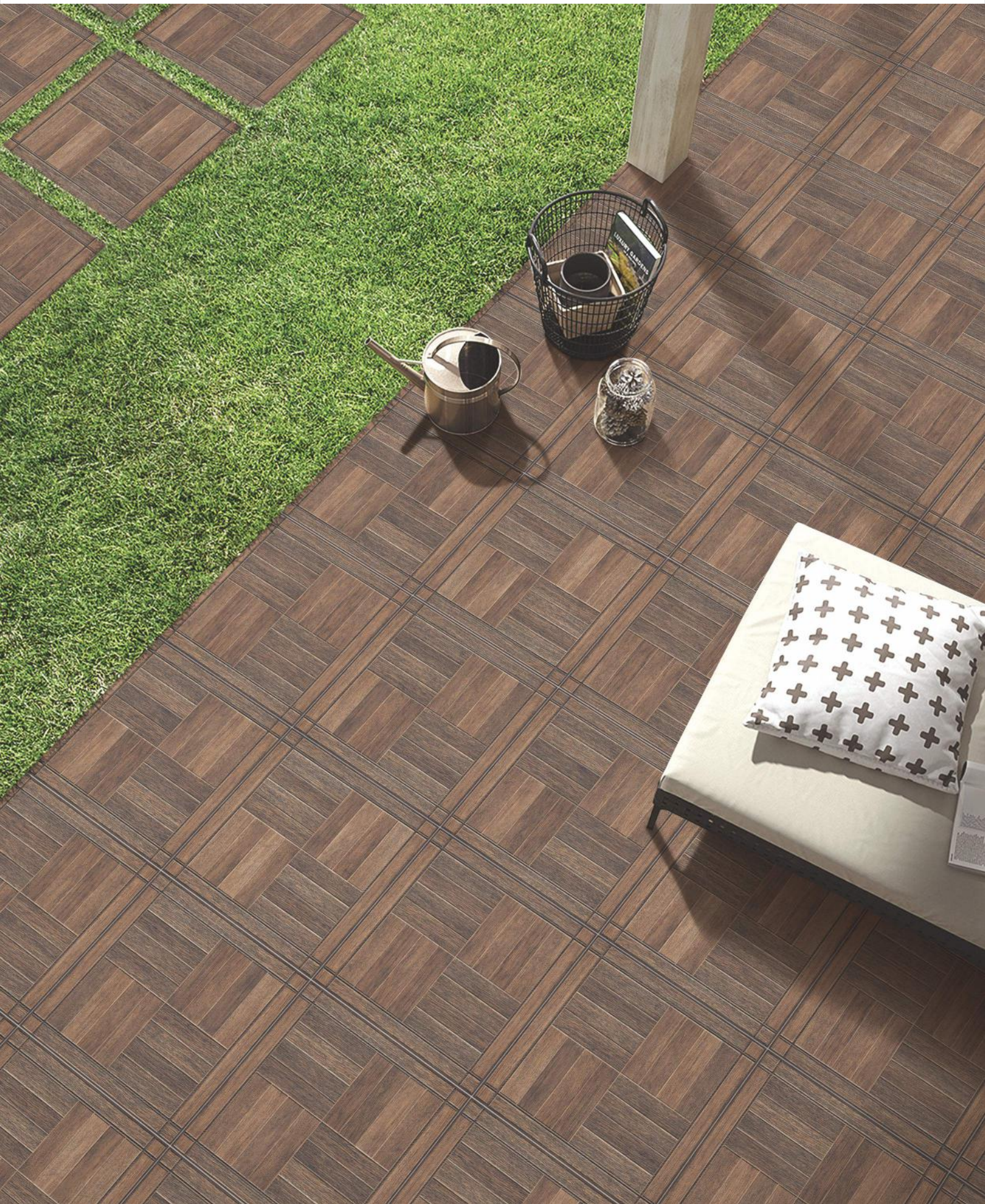


R D 22



R D 28





R D 23



R D 25

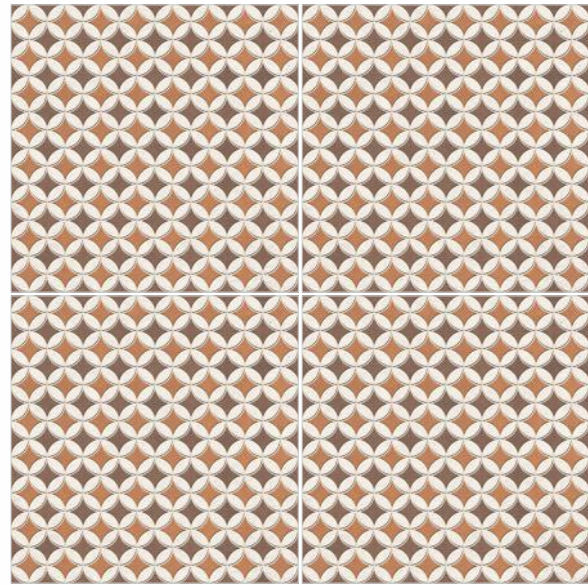


R D 24

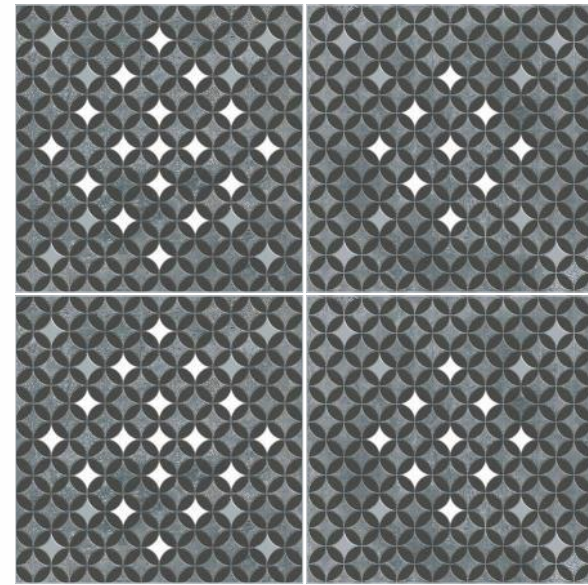


R D 26

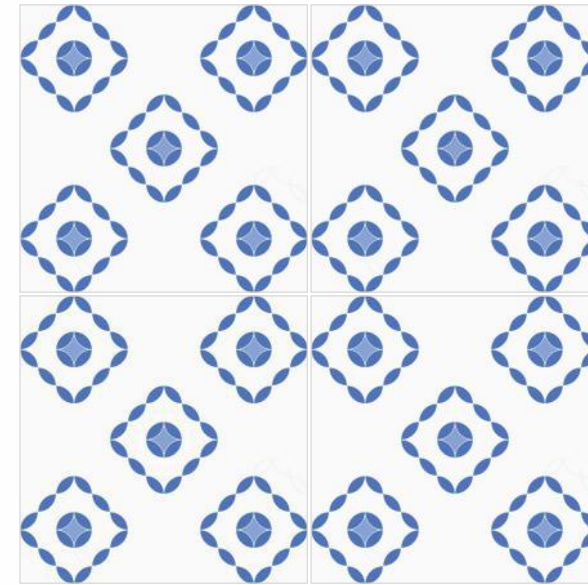




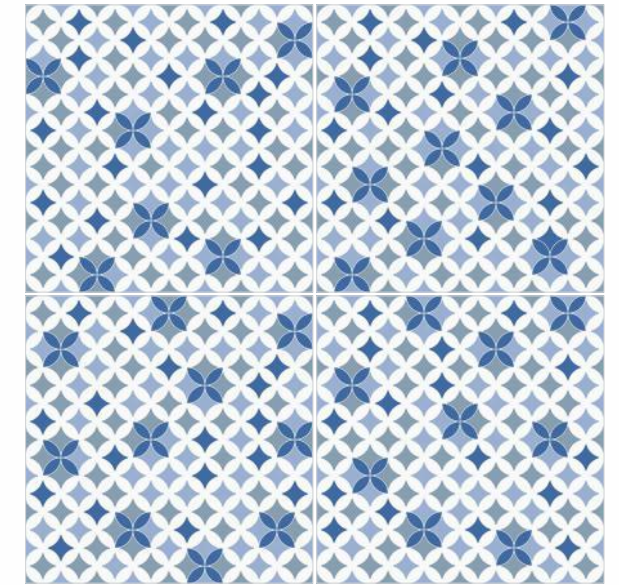
R D 34



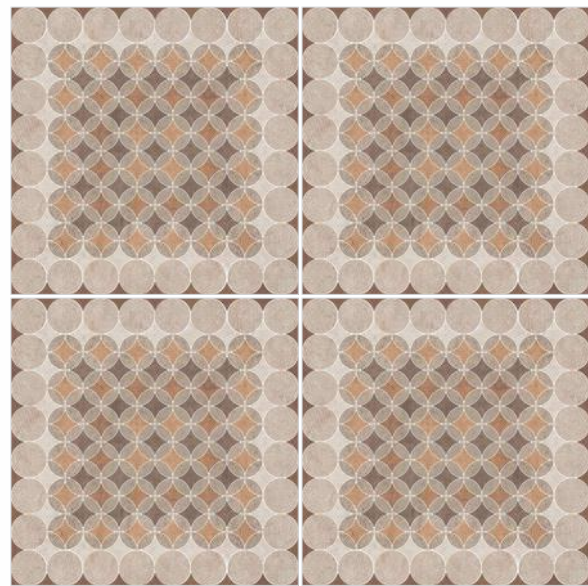
R D 36



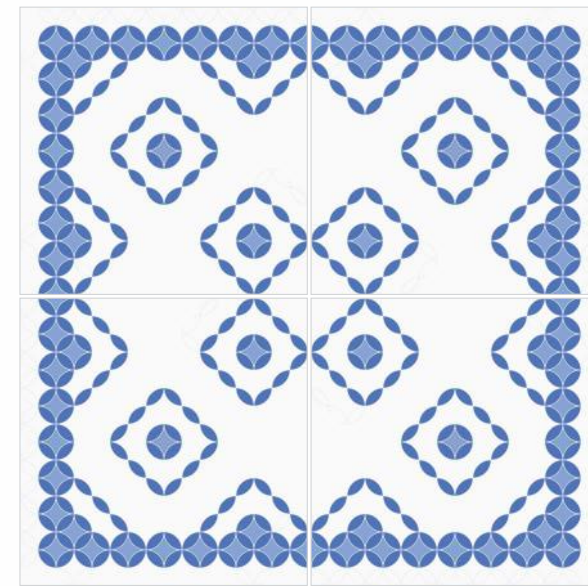
R D 30



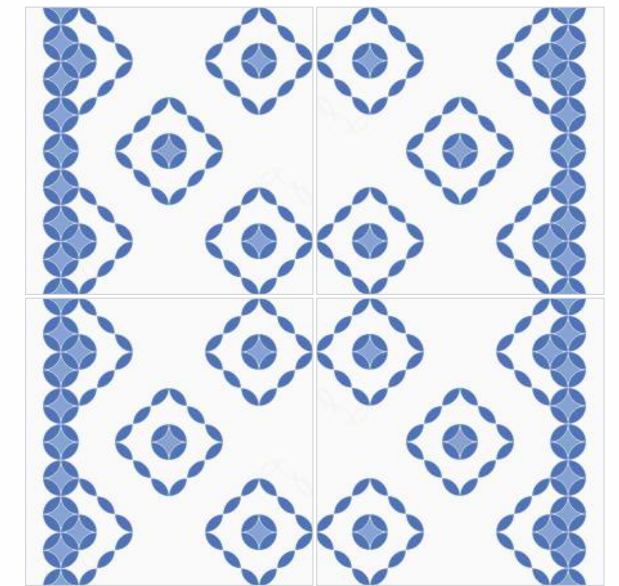
R D 33



R D 35

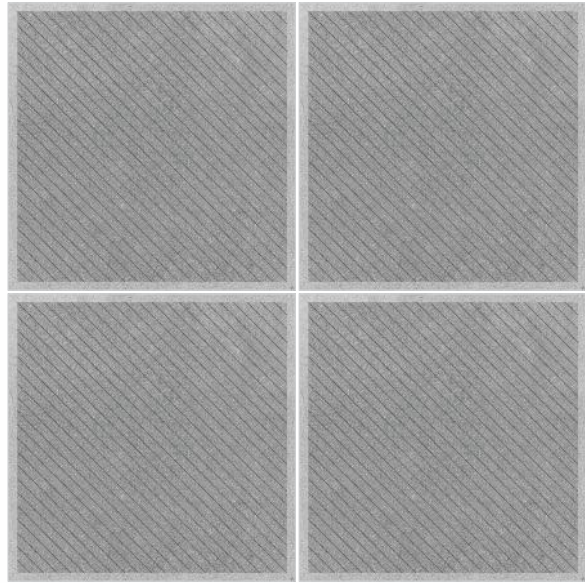


R D 31

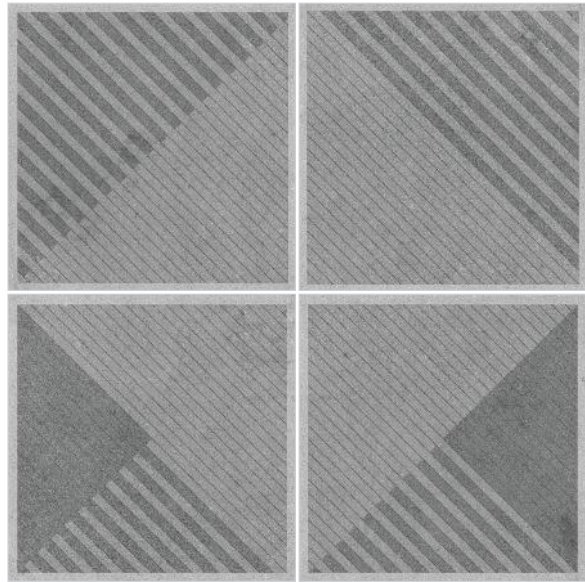


R D 32





R D 37

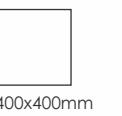


R D 38



**Floor**  
R D 37 + R D 38  
\_Size : 400x400mm

**THICKNESS:** 12 mm  
**SURFACE:** Matt

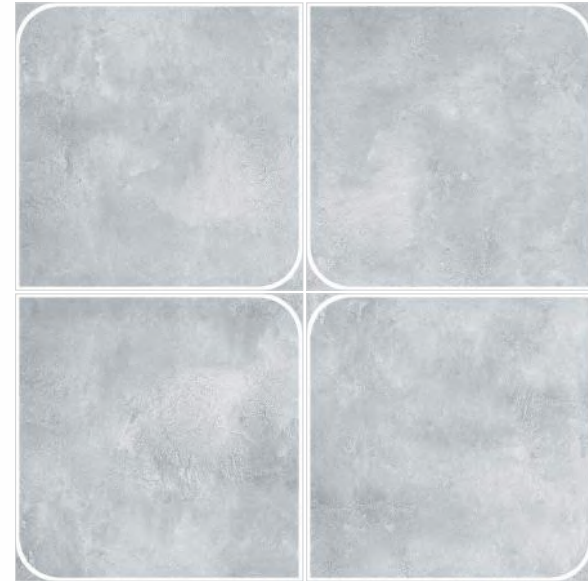


400x400mm





R D 39



R D 41



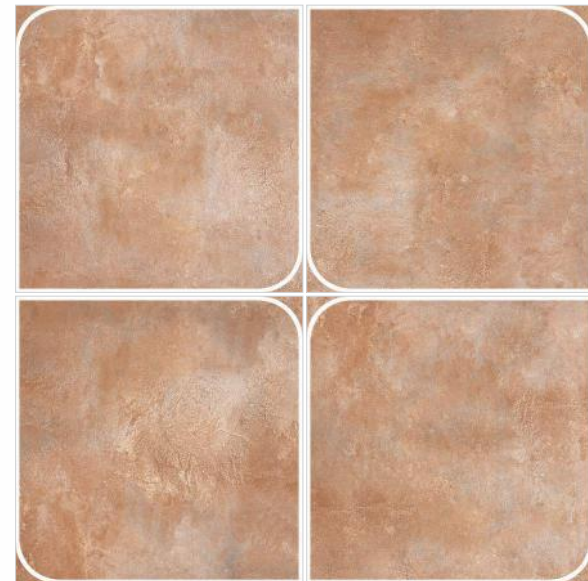
R D 43



R D 44



R D 40



R D 42

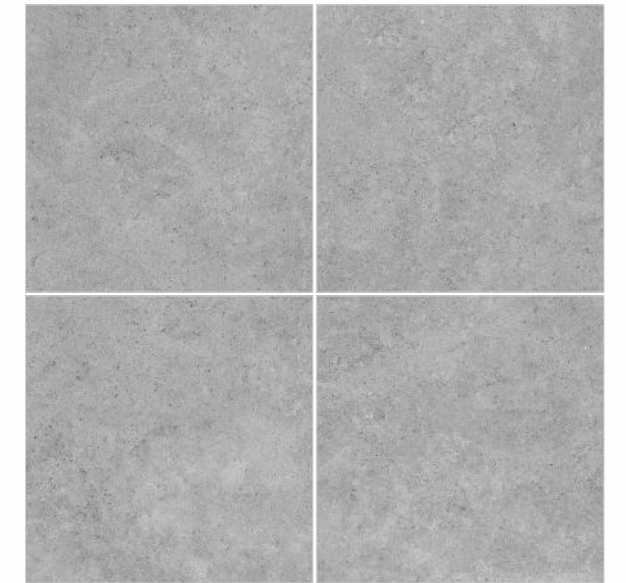


R D 45

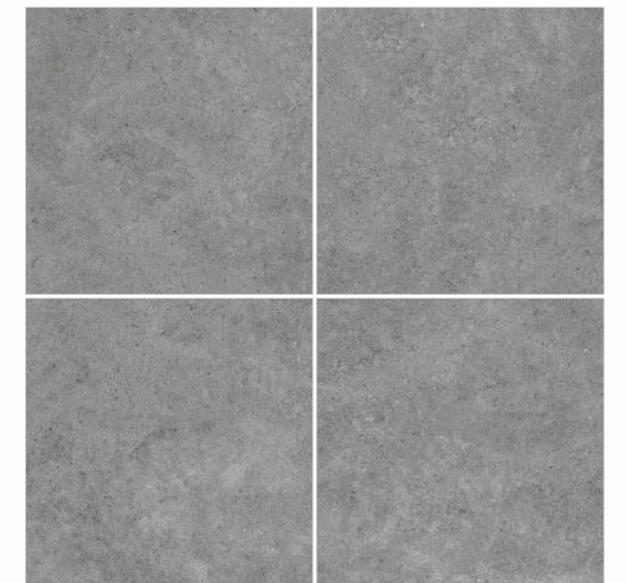




R D 48



R D 46



R D 47



**Desert Step**  
Fullbody Vitrified Tiles



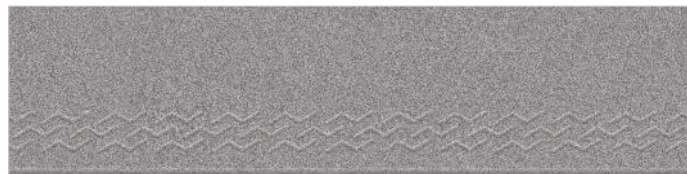
Desert Crema Step



Desert Sahara Step

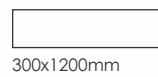


Desert Verde Step



Desert Gris Step

**THICKNESS:** 12 mm  
**SURFACE:** Matt

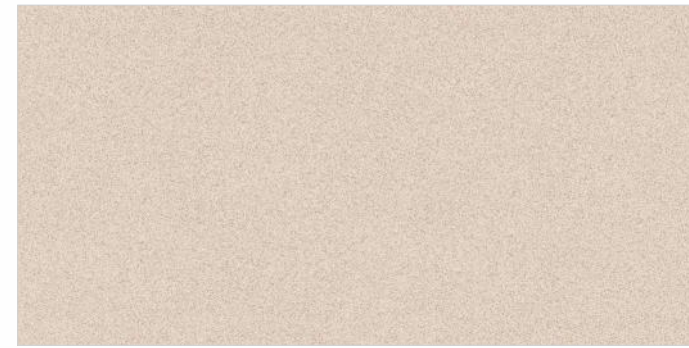


300x1200mm

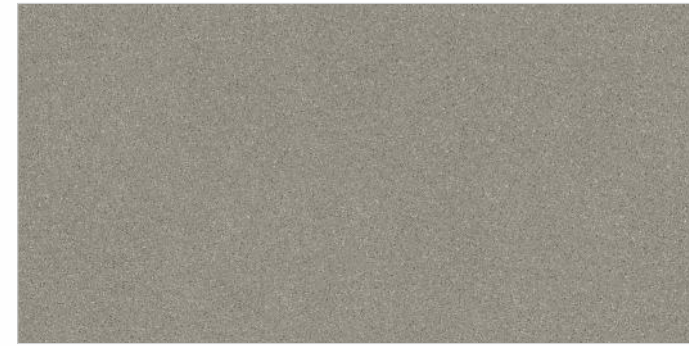
**Desert Riser**  
Fullbody Vitrified Tiles



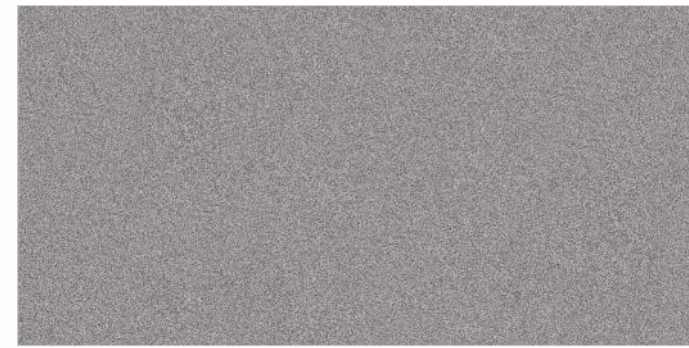
Desert Crema Riser



Desert Sahara Riser



Desert Verde Riser



Desert Gris Riser

**THICKNESS:** 12 mm  
**SURFACE:** Matt



600x1200mm



# Technical Specification

CHARACTERISTIC	STANDARD AS PER ISO13006:2018/ EN14411 Gr.BIIa	TEST METHOD	STANDARD AS PER IS15622:2017 Gr.BIIa	TEST METHOD	MEAN VALUE OF
<b>Regulatory Properties</b>					
Deviation in length and width	± 0.30 % (± 1.00mm)	ISO 10545-2	± 0.10 %	IS 13630-1	± 0.10 %
Deviation in thickness	± 5.00 % (± 0.50mm)	ISO 10545-2	± 5.00 %	IS 13630-1	± 4.00 %
Straightness in side	± 0.30 % (± 0.80mm)	ISO 10545-2	± 0.10 %	IS 13630-1	± 0.10 %
Rectangularity	± 0.30 % (± 1.50mm)	ISO 10545-2	± 0.10%	IS 13630-1	± 0.10 %
Surface flatness Central Curvature	± 0.40 % (± 1.80mm)	ISO 10545-2	± 0.50 %	IS 13630-1	± 0.20 %
Surface flatness Edge Curvature	± 0.40 % (± 1.80mm)	ISO 10545-2	± 0.50 %	IS 13630-1	± 0.20 %
Surface flatness Warpage	± 0.40 % (± 1.80mm)	ISO 10545-2	± 0.50 %	IS 13630-1	± 0.10 %
Surface Quality	> 95% defects free	ISO 10545-2	> 95% defects free	IS 13630-1	> 95% defects free
Small Color Difference	ΔE < 1.00	ISO 10545-16	N.A.	N.A.	No Change
Glossiness (Matt)	As per Manufacturer	Gloss Meter 60°	As per Manufacturer	Gloss Meter 60°	Min. 3°
<b>Structural Properties</b>					
Water absorption	≤ 0.50 %	ISO 10545-3	≤ 0.080 %	IS 13630-2	≤ 0.060 %
Bulk Density	As per Manufacturer	ISO 10545-3	Min. 2.20 g/cc	IS 13630-2	> 2.28 gm/cc
<b>Massive Mechanical Properties</b>					
Modulus of rupture(12mm)	Min. 35.0 N/mm²	ISO 10545-4	Min. 35.0 N/mm²	IS 13630-6	Min. 40.0 N/mm²
Breaking strength thickness ≥7.5(12mm)	Min. 1300.0 N	ISO 10545-4	Min. 1300.0 N	IS 13630-6	Min. 1800.0 N
<b>Surface Mechanical Properties</b>					
MOH'S hardness	As per Manufacturer	BS EN 15771:2010	Min. 5	IS 13630-13	Min. 6
Surface Abrasion Resistance	As per Manufacturer	ISO 10545-7	Min. Class II	IS 13630-11	Min. Class 3 / Min. Class III
Deep Abrasion Resistance	Max. 175 mm³	ISO 10545-6	Max. 140 mm³	IS 13630-12	Max 132 mm³
<b>Thermal Hygrometric Properties</b>					
Moisture expansion	Max. 0.06%(0.6mm/m)	ISO 10545-10	Max. 0.02mm/m	IS 13630-3	Max. 0.02 mm/m
Thermal expansion(COE) at 100°C	As per Manufacturer	ISO 10545-8	Max. 9.0 x 10 <sup>-6</sup>	IS 13630-4	Max. 6 x 10 <sup>-6</sup>
Thermal shock resistance	Min. 10 Cycle	ISO 10545-9	Min. 10 Cycle	IS 13630-5	Min. 10 Cycle
Crazing Resistance at (ISO 500±20 kPa-159°C±1°C) / (IS 750±20 kPa-168°C±1°C)	As per Manufacturer	ISO 10545-11	Min. 4 Cycle	IS 13630-9	Min. 6 Cycle
Impact resistance(COR)	Min. 0.55	ISO 10545-5	Min. 0.55	IS 13630-14	Min. 0.55
Frost resistance	As per Manufacturer	ISO 10545-12	As per Manufacturer	IS 13630-10	Frost Proof
<b>Chemical Properties</b>					
Resistance to Staining Glazed	As per Manufacturer	ISO 10545-14	Min. Class 2	IS 13630-8	Min. Class 4/Min. Class 2
Resistance to Household Chemicals &Swimming Pool Salts Glazed	Min. Class UB	ISO 10545-13	As per Manufacturer	IS 13630-7	Min. Class UB/Min. Class A
Resistance to Low Concentrate Acidand Alkalis Glazed	As per Manufacturer	ISO 10545-13	As per Manufacturer	IS 13630-7	Min. Class ULB*/Min. Class A*
Resistance to High Concentrate Acidand Alkalis Glazed	As per Manufacturer	ISO 10545-13	As per Manufacturer ..	IS 13630-7	Min. Class UHB*/Min. Class A* ..
<b>Safety Properties</b>					
Skid resistance(DCOF-DRY)#	As per Manufacturer	ANSI/NFSI B101.3-2012	As per Manufacturer	N.A.	> 0.40
Slip resistance(DCOF)( R value )#	As per Manufacturer	DIN 51130	As per Manufacturer	N.A.	R9 to R13**
Fire Resistance	As per Manufacturer	N.A.	As per Manufacturer	N.A.	Fire Proof

\* Except Hydrofluoric Acid & it's compound

\*\*Depending on Application area (low or high intensity of traffic)

# As per customer requirement

## Packing Details

PRODUCT	SIZE	THICKNESS	TILES / BOX	COVERAGE AREA / BOX	
ROCKDECK	400x400mm / 40x40cm	12mm	5 pcs.	0.80 sq. mtr.	8.61 sq. ft.
DESERT STEP	300x1200mm / 30x120cm	12mm	3 pcs.	1.08 sq. mtr.	11.62 sq. ft.
DESERT RISER	600x1200mm / 60x120cm	12mm	2 pcs.	1.44 sq. mtr.	15.50 sq. ft.



